

## switchSENSE® Biochips Storage Information

Dear Customer,

switchSENSE® biochips are optimally stored dry, in a dark location, and at a temperature of +2 °C to +8 °C. To that effect, we recommend conducting the following biochip handling steps:

1. Before opening the plastic bag, **allow the chip to reach room temperature** to avoid potential condensation on the biochip surface.
2. To increase the chip life time, the **DNA nanolevers should be stored in double-stranded** form without attached ligand molecules. Thus, in switchBUILD add the standby routine with regeneration step at the end of your measurement. This ensures that the DNA nanolevers are hybridized with their complementary strands prior to ejecting the chip.
3. The flow channels should be as dry as possible. **For chip ejection** from the DRX instrument, please **select the used flow channels for venting** with air. When the chip is ejected from the DRX instrument, the used flow channels are vented with air for drying. Additionally, it is advisable to **manually purge all** – also unused – **flow channels** with compressed gas (dust remover, nitrogen line) from biochip bottom-side intensely, see picture 1 and 2.
4. **After blow-drying all channels, place the biochip back into the plastic bag it was delivered in, along with the desiccation bag**, see picture 3. The bottom side of the biochip should be positioned on top of the desiccation bag. Please make sure to fully close the plastic bag using its zip lock, see picture 4. Store the bagged biochip between +2° and +8° C. Please note that the capacity of the desiccation bags to absorb water is limited. Thus, each chip is delivered with additional desiccation bags. For ideal storage conditions, we advise to replace the desiccation bag in the chip storage bag frequently.

### Chip shelf life:

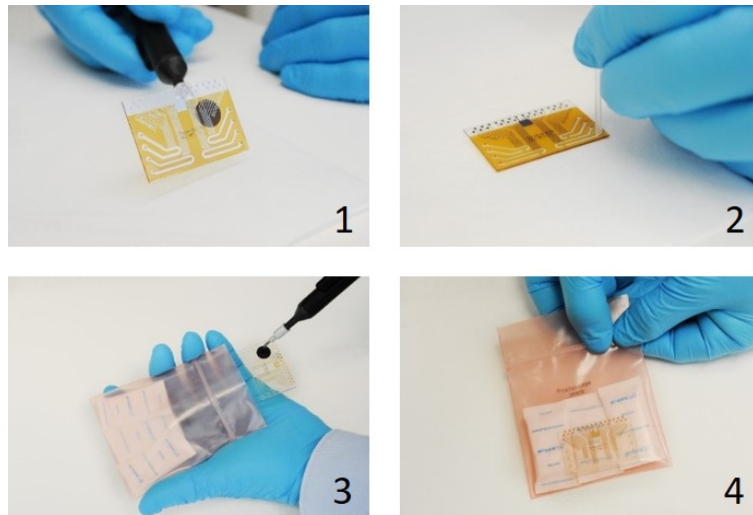
After shipment of a biochip, the shelf life of any unopened biochip is 6 months if the biochip is stored as specified.

After first use of a biochip, unused flow channels exhibit best experimental performance within two to three weeks.

Please note that the biochip lifetime can be affected by experimental conditions, assay types, and samples tested.

In case you have any questions about chip storage or handling, please contact us at [support@dynamic-biosensors.com](mailto:support@dynamic-biosensors.com).

Your Dynamic Biosensors Team



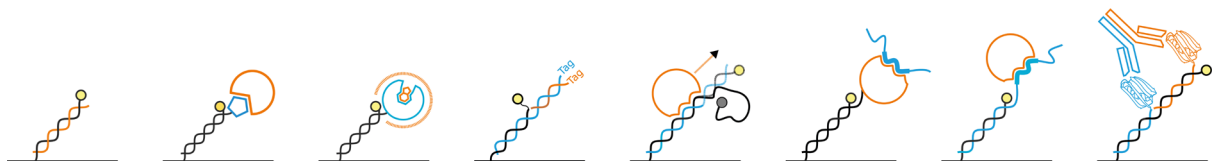
## Contact

**Dynamic Biosensors GmbH**  
Lochhamerstr. 15  
82152 Martinsried/Planegg  
Germany

**Dynamic Biosensors Inc.**  
9705 Carroll Centre Road, Suite 100  
San Diego, CA 92126  
USA

**Order Information** Phone: +49 89 89 74 544 0  
order@dynamic-biosensors.com

**Technical Support** Phone: +49 89 89 74 544 66  
support@dynamic-biosensors.com



**switchSENSE®** is a proprietary measurement technology by Dynamic Biosensors GmbH.  
Instruments and biochips are engineered and manufactured in Germany.

© 2018 Dynamic Biosensors GmbH | Dynamic Biosensors Inc. All rights reserved.  
Munich DE | San Diego, CA USA | Betchton UK | Tokyo JP | Singapore SG